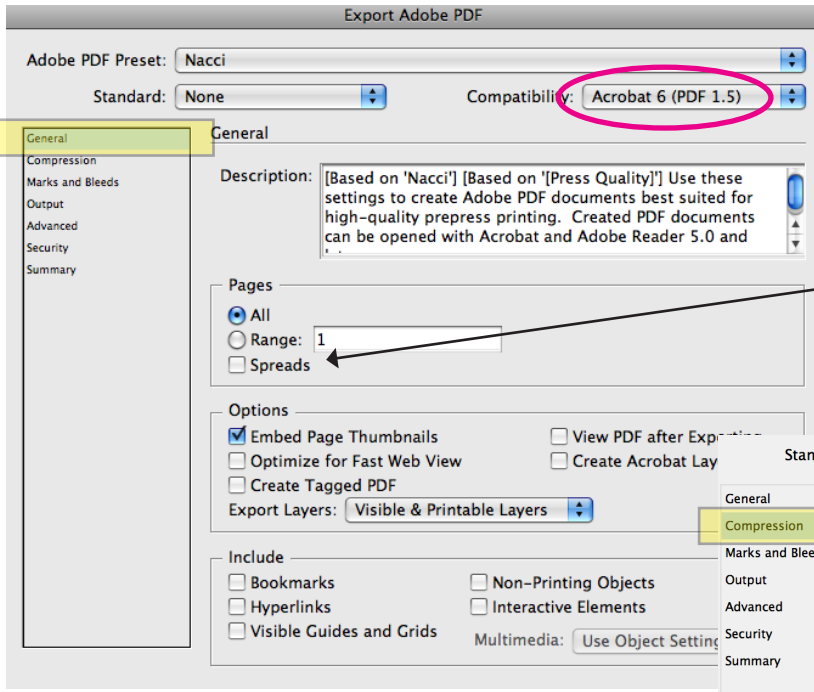
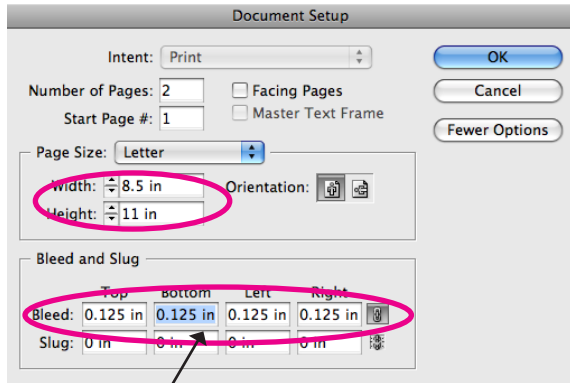
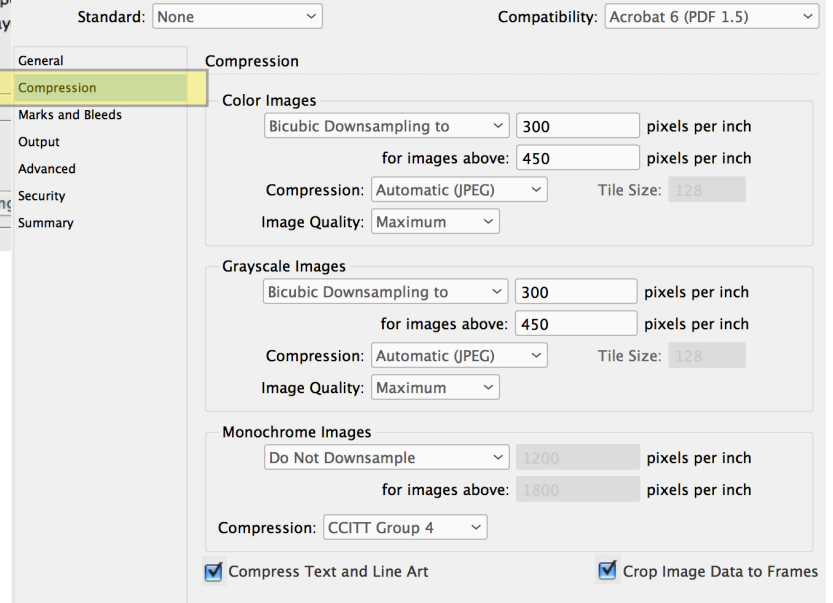


PDF Instructions - Indesign



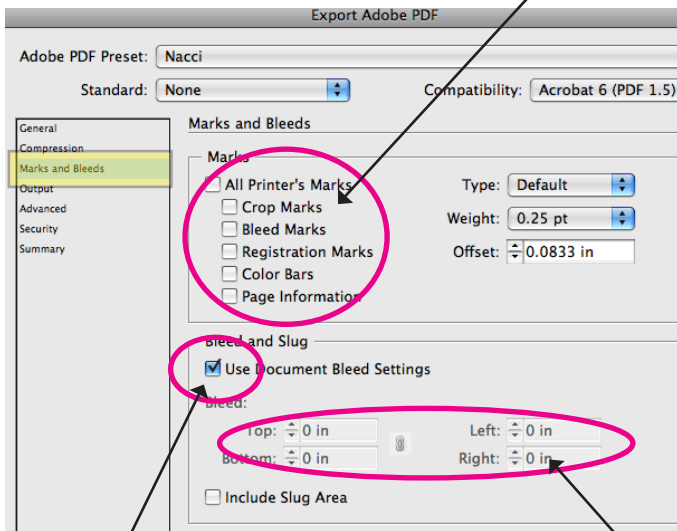
DO NOT export pages as spreads. We require them as single pages (in 1 pdf) in order to impose for our presses.



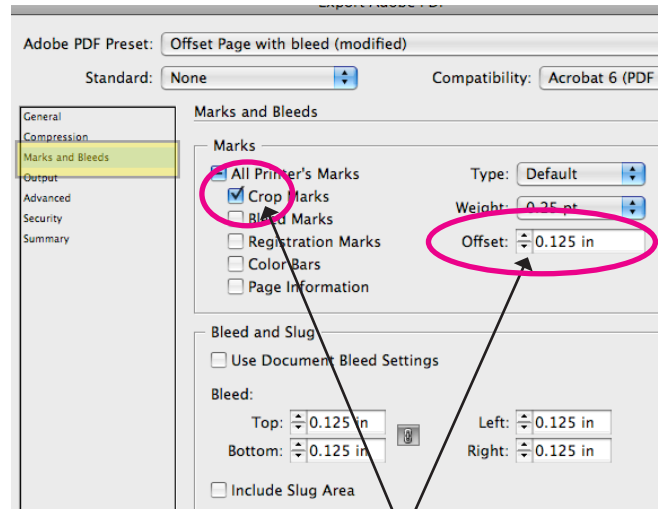
Document should be set up to the proper trim size when document is created and account for bleed.

WE PREFER THAT NOTHING IS CHECKED IN THIS SECTION

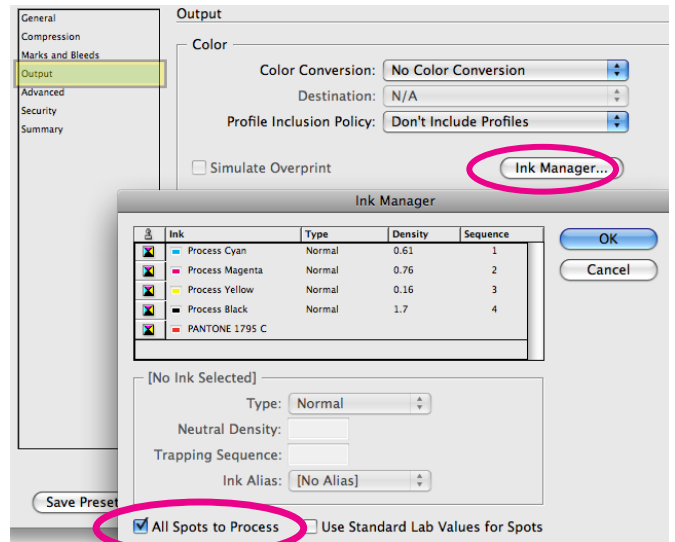
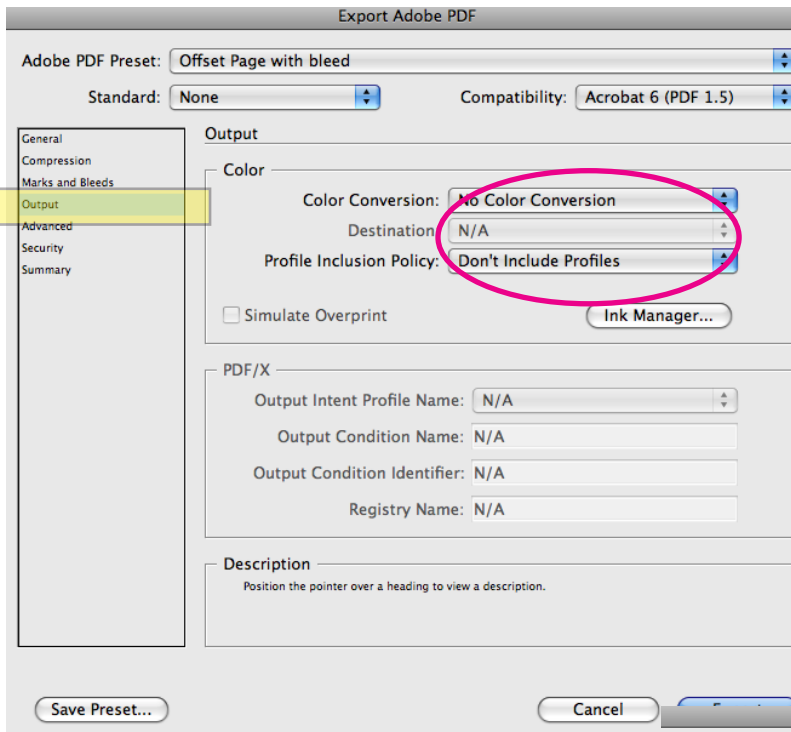
Do not include any non printing colors or items. Turn off die lines, 3 hole punches, etc. Die lines should be confirmed prior to submitting a job and supplied as a 1 color pdf.



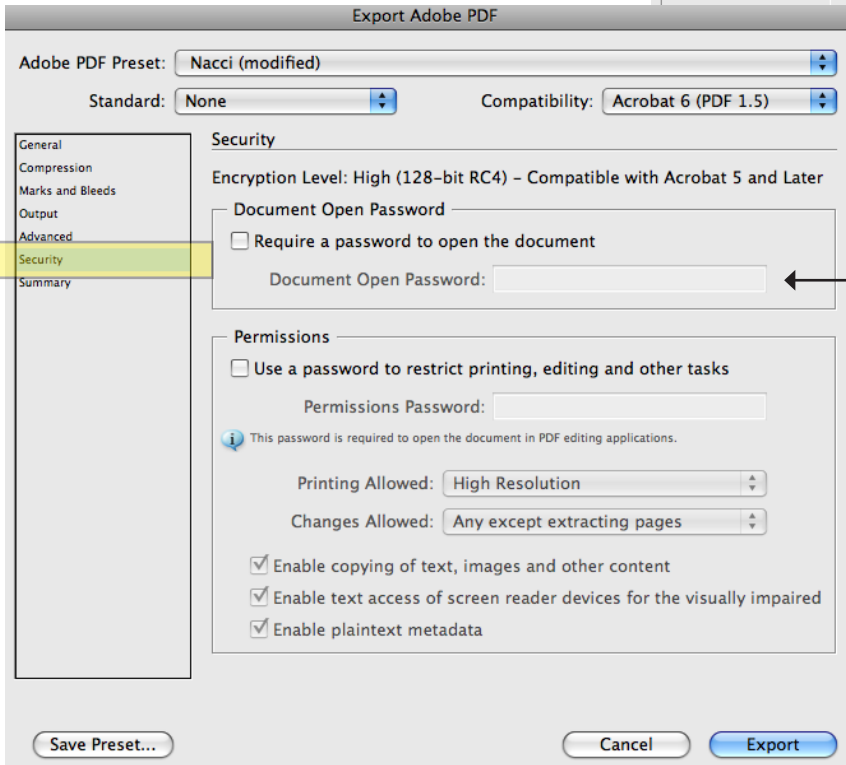
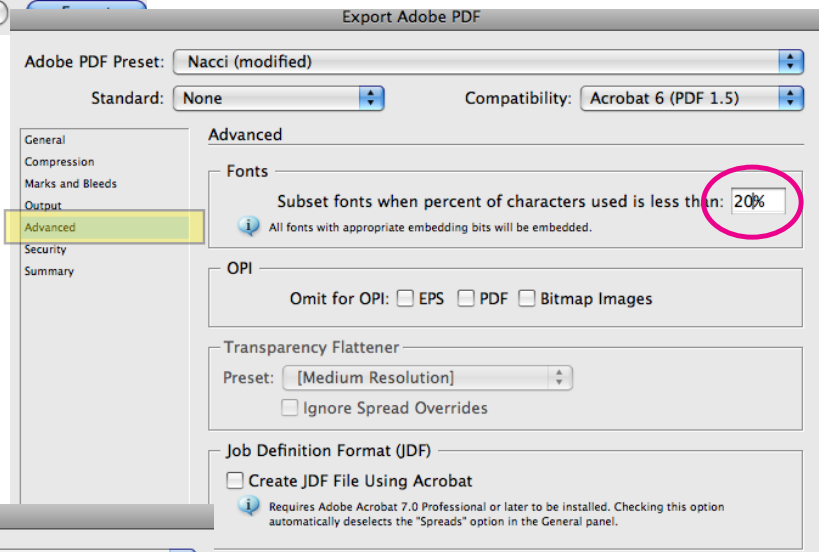
If the job is supposed to bleed and the document is not set up to include it, uncheck "Use document bleed settings" and add .125 to all sides, otherwise leave it checked.



If you need to export with crop marks for reference set offset to .125. This will keep the marks out of the bleed area.



To convert spot colors to CMYK. If your project IS printing in spot colors leave UNCHECKED.



Do not password protect the pdf. This can create issues with the rip.

Always review your PDF once it is created. Check for folding, bleeds, correct colors, etc.